

FROM COMBUSTION TO ELECTRIC, e-RETROFIT



Citroën Jumpy*

Fiat Scudo*

Opel Vivaro*

Peugeot Expert*

CONVERT YOUR DIESEL VEHICLE TO ELECTRIC VEHICLE



BUDGET



DECARBONATION



MANUFACTURERS
WARRANTY



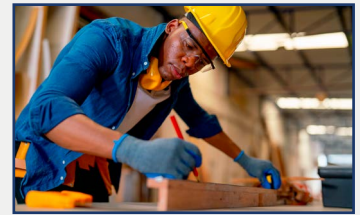
MAIN CUSTOMER TARGETS



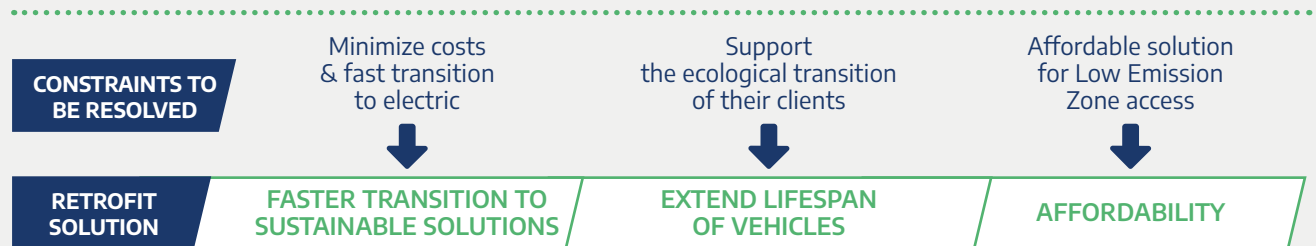
**Large enterprise fleets
+
Local authorities**



**Large leasing
companies**



**Small fleets
/SMEs**



BENEFITS



BUDGET

- **The equipment already installed is preserved** during conversion, avoiding new investments.
- Possibility to benefit from **Government and/or regional grants**.
- **Reduced usage costs** as for a new electric vehicle (energy, maintenance...) with a lower investment.



DECARBONATION

- **CO₂ emissions are reduced** by 61% compared to a diesel vehicle, and by 56% compared to a new electric vehicle. You can consult this study on the site of Avere-France. (Source: ADEME 2021).
- **Support the circular economy:**
 - Reuse or recycling of engine and powertrain components.
 - Lifespan extension of the vehicle.



MANUFACTURERS WARRANTY

- Use of **genuine parts**.
- Conversion made **in France**.
- **Manufacturers warranty** (8 years or 160,000 km for battery, 2 years for the powertrain).
- **Identical service** to that of an electric vehicle in the Stellantis network.
- Access to **service contracts**.
- **Same advantages** as an electric vehicle (connected services and peace of mind).



REGULATORY

- **Access to LEZs** (Low Emission Zones).
- **Mobility Orientation Act** (LOM).

ELECTRIC RETROFIT, **IN 5 STEPS**



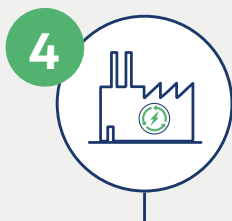
VEHICLE ELIGIBILITY



APPOINTMENT: EVALUATION OF THE VEHICLE
(vehicle diagnosis, choice of options and finalization of the order)



VEHICLE PICK-UP



VEHICLE CONVERSION



VEHICLE HANDOVER

(certificate of conformity linked to the updated vehicle documentation)

BENEFITS

Performances consistent with professional usage



45 kWh

Battery capacity



54 mins

20 - 80%
Fast charging*



100 kW

Powertrain
Equivalent: 136 hp



>200 km

Range
(WLTP cycle)*



900 Kg

Payload*
(vehicle-dependent)



**Loading
area
preserved**

*Data to be confirmed when the vehicle is type-approved.

CHARACTERISTICS

A true electric vehicle

OUTSIDE APPEARANCE



Vehicle identification



Fuel cap blocked



New charging plug
Connector: Type 2 CCS Combo (CCS2)

INSIDE APPEARANCE



New cluster

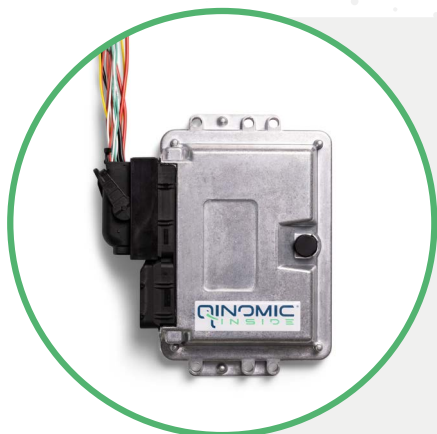
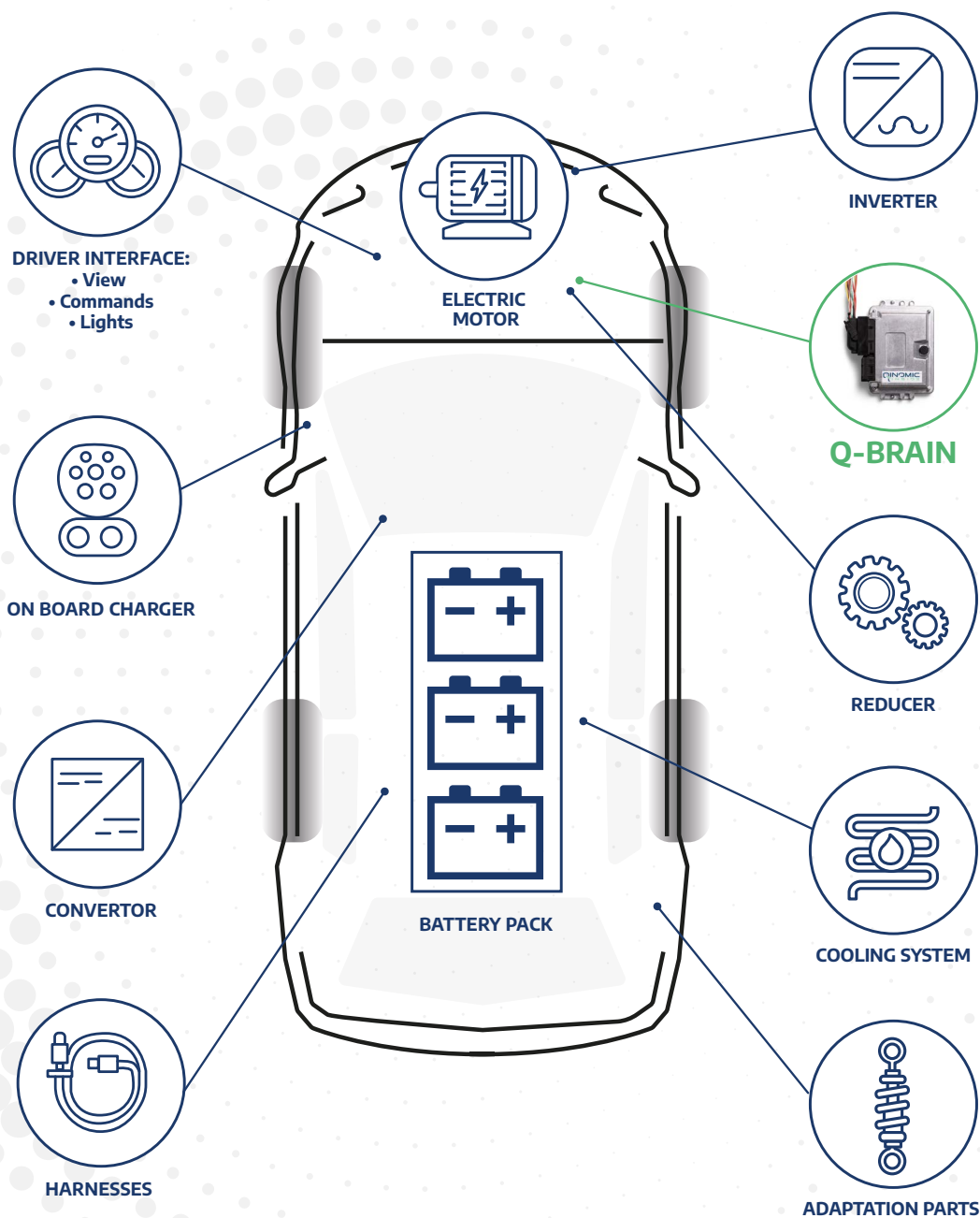
- Battery charging level
- Speedometer
- Power consumption gauge



Speed Selector

- PRND
- Driving mode selector

OVERVIEW OF A RETROFITTED VEHICLE



QINOMIC Q-BRAIN
UPCYCLING ENGINEERING

A major innovation, the Q-Brain (system controller) intelligent housing allows the new electric powertrain to be combined with the retrofitted vehicle in order to preserve all the original services: driving assistance, heating / air conditioning etc...



Citroën Jumpy*



Peugeot Expert*



Fiat Scudo*



Opel Vivaro*

* Subject to eligibility.

TO FIND OUT MORE +



[Ademe](#)



[Avere France](#)



[Qinomic](#)



[Service-public.fr](#)



[SUSTAINera](#)